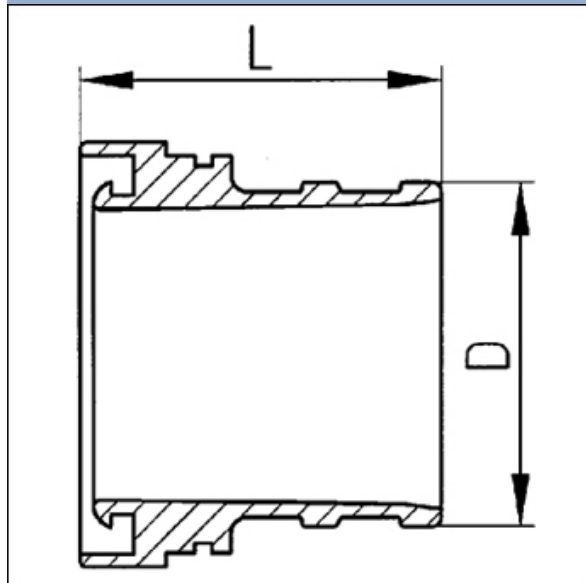


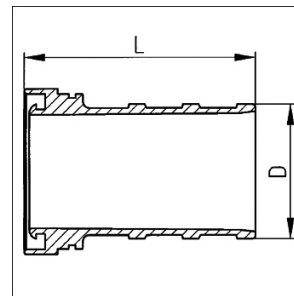
- Aluminium alloys (A)
- Copper alloys (C)
- High grade steel (St)

Tail pieces for hose couplings Storz System



1701 A

- 1701 Tail pieces for delivery operation
A
- 1701 Tail pieces for delivery and suction operation (DS)
B



1701 B

| Nominal size | For hose i. d. D (mm) | Length tail piece L (mm) | Weight (kg) | Ident.No. | Remarks | Alloy |
|--------------|-----------------------|--------------------------|-------------|-----------|----------------------------|-------|
| 25=D-DS | 25 | 50 | 0,030 | 40169606 | ¹⁾ , DIN 14 301 | A |
| 52=C | 42 | 55 | 0,110 | 30133702 | ¹⁾ , DIN 14 332 | A |
| 52=C | 52 | 55 | 0,145 | 40239002 | ¹⁾ , DIN 14 302 | A |
| 52=C-DS | 52 | 90 | 0,210 | 40019907 | ¹⁾ , DIN 14 321 | A |
| 75=B | 75 | 60 | 0,280 | 40240002 | ¹⁾ , DIN 14 303 | A |
| 75=B-DS | 75 | 125 | 0,480 | 40007707 | ¹⁾ , DIN 14 322 | A |
| 75=B-DS | 75 | 125 | 1,000 | 40433944 | ¹⁾ , Steel | A |
| 110=A-DS | 100 | 170 | 0,960 | 30044307 | ¹⁾ | A |
| 110=A-DS | 100 | 170 | 2,100 | 30350944 | ¹⁾ , Steel | A |
| 110=A-DS | 110 | 170 | 1,010 | 30006007 | ¹⁾ , DIN 14 323 | A |

Other sizes and materials on request.