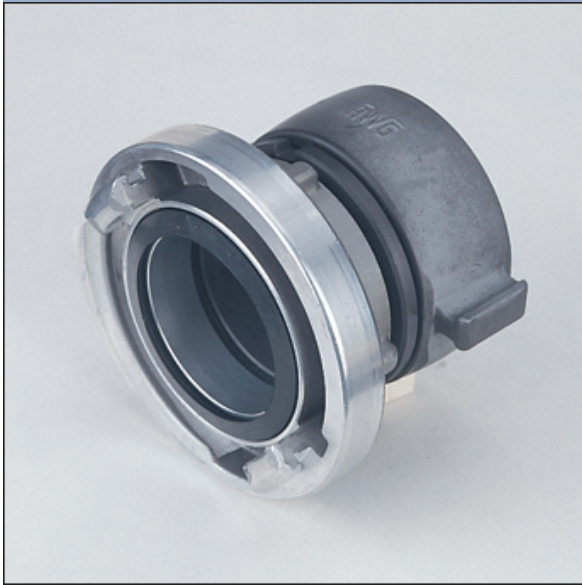


Couplings according to North American Standard NFPA

Couplings according NFPA 1963 for internal and external binding suitable for delivery- and suction hoses. Couplings Storz system for water supply lines.

- Aluminium alloys (A)
- Copper alloys (C)

Adapters Storz to NH tread, swivelling



1603 A

Storz - NH female thread

Nominal size (inch)	Lug spacing (mm)	NH-thread	Weight (kg)	Ident.No.	Remarks	Alloy
65/2½"	81 / 3 3/16"	NH 2½"	0,700	60558837		A
75/3"	89 / 3 1/3"	NH 2½"	0,900	40391137		A
100/4"	115 / 4 17/32"	NH 2½"	1,500	30250937		A
100/4"		NH 3"	1,500	40381137		A
100/4"		NH 3½"	1,500	40387037		A
100/4"		NH 4"	1,800	30249537		A
100/4"		NH 4½"	2,200	30249637		A
100/4"		NH 5"	2,700	30260937		A
100/4"		NH 6"	3,200	20155437		A
125/5"	148 / 5 53/64"	NH 2½"	2,500	30290337		A
125/5"		NH 3"	2,500	40387137		A
125/5"		NH 3½"	2,500	40391037		A
125/5"		NH 4"	2,700	30249737		A
125/5"		NH 4½"	3,100	30249837		A
125/5"		NH 5"	3,300	30261037		A
125/5"		NH 6"	3,500	20167537		A



Nominal size (inch)	Lug spacing (mm)	NH-thread	Weight (kg)	Ident.No.	Remarks	Alloy
150/6"	160 / 6 5/16"	NH 6"	4,000	60558737		A

Other sizes and styles on request.