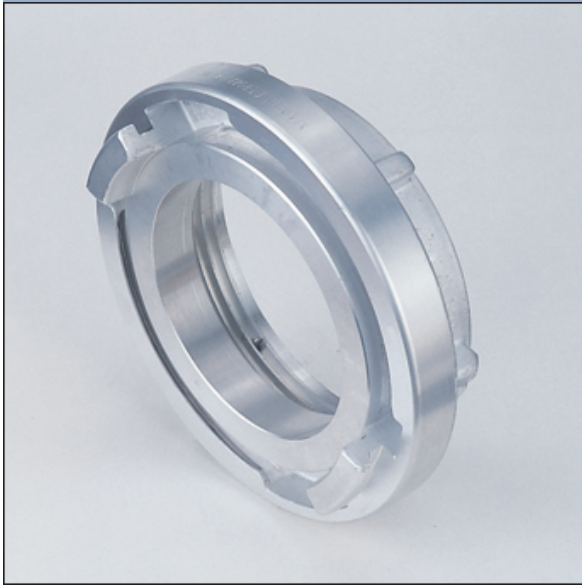


Couplings according NFPA 1963 for internal and external binding suitable for delivery- and suction hoses. Couplings Storz system for water supply lines.

- Aluminium alloys (A)
- Copper alloys (C)

### Adapters Storz with metal sealing surface to NH female thread



1405

Nominal size (inch)	Lug spacing (mm)	Female thread	Weight (kg)	Ident.No.	Remarks	Alloy
100/4"	115 / 4 17/32"	NH 4"	1,100	40398937		A
100/4"		NH 4½"	1,115	40375833		A
100/4"		Ø116/138 mm	1,000	30329731	without thread <sup>1)</sup>	A
125/5"	148 / 5 53/64"	NH 4"	1,600	30298037		A
125/5"		NH 4½"	1,270	30293931		A
125/5"		Ø 118/148 mm	1,700	30293831	without thread <sup>1)</sup>	A