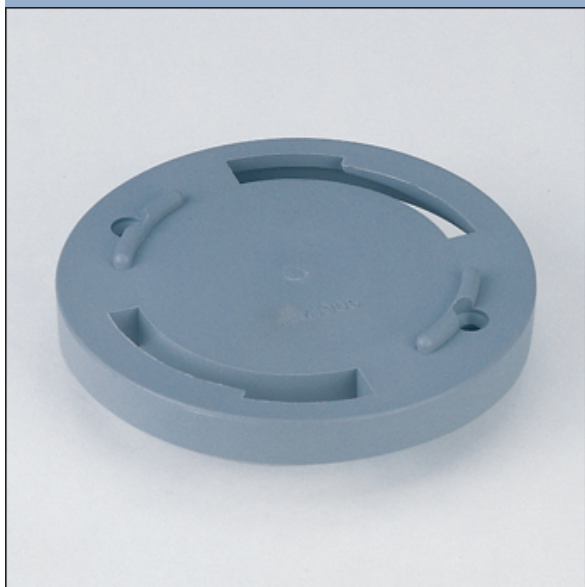


- Aluminium alloys (A)
- Copper alloys (C)
- High grade steel (St)

## Holding devices for Storz fittings



1309

For the firm storage of appliances and fittings containing Storz adapters, holding devices can be used. These devices have recesses into which the lugs or the clamp fitting are inserted and coupled by clockwise rotation. The holding devices are completed with bores for mounting.

Nominal size	Lug spacing b (mm)	Weight (kg)	Ident-No.	Remarks	Alloy
38/65	51 / 81	0,185	30287332		A
52/75=C/B	66 / 89	0,120	30382662	Plastic	A
100	115	0,315	30103532		A
110/125=A/125	133 / 148	0,200	30382762	Plastic	A
125	148	0,605	30103832		A