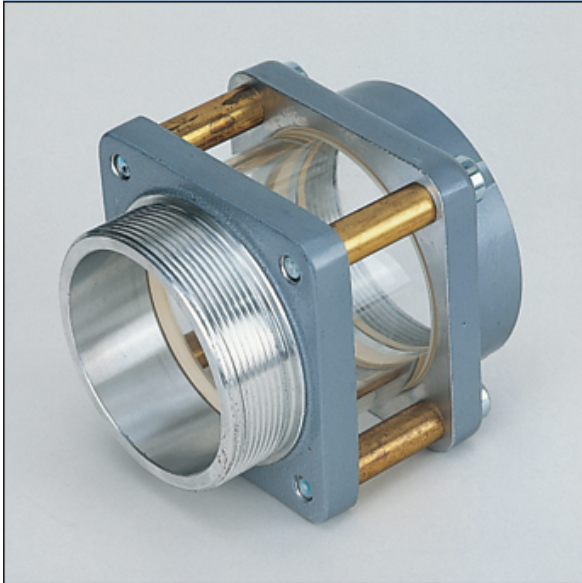


Dimensions according to DIN 2501 PN16

- Aluminium alloys (A)
- Copper alloys (C)

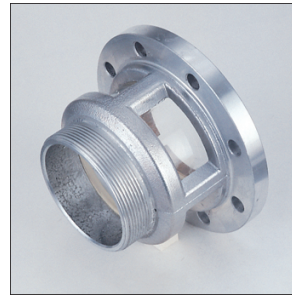
Sight glass fittings PN 10



1905

For monitoring feeding and discharge processes in pipework.

- 1905 Three-part
- 1906 Two-part



1906

Inlet thread / TW flange	Outlet thread	Length (mm)	Width (mm)	Height (mm)	Weight (kg)	Ident-No.	Remarks	Alloy
G 3	G 3 A	112	105	105	1,100	30199233	style 1905	A
G 3	G 3 A	133	105	105	1,075	60565833	style 1905	A
G 3 A	G 3 A	121	105	105	1,100	30173733	style 1905	A
G 4	G 4 A	160	150	150	2,100	20173633	style 1905	A
G 4	G 4 A	136	138	138	1,575	40471333	style 1906	A
G 4 A	G 4 A	190	150	150	2,775	60492433	style 1905	A
TW-Flansch	G 3 A	94	154	154	1,000	20176533	style 1906	A
TW-Flansch	G 3 A	94	154	154	1,100	60335433	style 1906 ¹⁾	A
TW-Flansch	G 3 A	94	154	154	2,760	20176595	style 1906	A
TW-Flansch	G 3 A	94	154	154	1,100	30137033	style 1905	A
TW-Flansch	G 3 A	94	154	154	1,100	60600433	style 1905 ¹⁾	A
TW-Flansch	G 4 A	132	172	172	2,300	20173733	style 1906	A

As per: 31.12.2011