

A non-symmetrical quick connection coupling with a male and female part. These couplings are only suitable for delivery operation. For suction operation round thread couplings are in use.

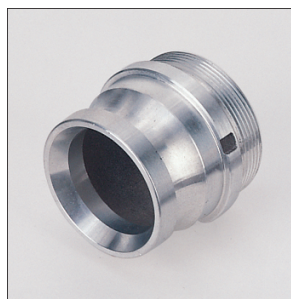
- Aluminium alloys (A)
- Copper alloys (C)

### Adapters Instantaneous male with BSP and NH threads



1210 B

1210 B: with Female Thread  
1211 B: with Male Thread



1211 B

Nominal size (inch)	Female thread	Male thread	Weight (kg)	Style	Ident.No.	Remarks	Alloy
1 ½"	G 1 ½"		0,200	1210 B	60263433		A
1 ½"		G 1 ½" A	0,200	1211 B	60182433		A
1 ½"	G 2"		0,185	1210 B	40241133		A
1 ½"	G 2"		0,490	1210 B	40375395		A
2 ½"	G 2"		0,180	1210 B	40272032		A
2 ½"	G 2"		0,800	1210 B	40271293		A
2 ½"		G 2" A	0,220	1211 B	40111533		A
2 ½"		G 2" A	0,750	1211 B	40111593		A
2 ½"	G 2 ½"		0,220	1210 B	40178833		A
2 ½"	G 2 ½"		0,800	1210 B	40273293		A
2 ½"		G 2 ½" A	0,210	1211 B	40111033		A
2 ½"		G 2 ½" A	0,715	1211 B	40111093		A
2 ½"	NH 2 ½"		0,265	1210 B	40329034	thread NFPA 1963	A
2 ½"		NH 2 ½" A	0,385	1211 B	40344135	thread NFPA 1963	A

As per: 19.12.2011