

A non-symmetrical quick connection coupling with a male and female part. These couplings are only suitable for delivery operation. For suction operation round thread couplings are in use.

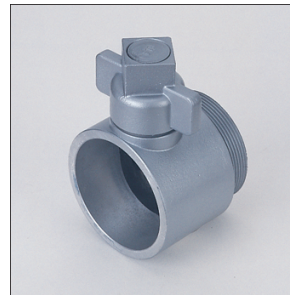
- Aluminium alloys (A)
- Copper alloys (C)

Adapters Instantaneous female with BSP and NH threads



1210 A

1210 A: with Female Thread
1211 A: with Male Thread



1211 A

Nominal size (inch)	Female thread	Male thread	Weight (kg)	Style	Ident.No.	Remarks	Alloy
1 1/2"	G 1 1/2		0,300	1210 A	30183233		A
1 1/2"	G 1 1/2		0,950	1210 A	30183295		A
1 1/2"		G 1 1/2 A	0,300	1211 A	30267533		A
1 1/2"		G 1 1/2 A	0,900	1211 A	30267593		A
1 1/2"	G 2		0,285	1210 A	30110032		A
1 1/2"	G 2		0,890	1210 A	30110092		A
2 1/2"	G 2		0,650	1210 A	30037432		A
2 1/2"	G 2		1,820	1210 A	30228895		A
2 1/2"		G 2 A	0,600	1211 A	30037532		A
2 1/2"		G 2 A	1,800	1211 A	30037593		A
2 1/2"	G 2 1/2		0,600	1210 A	30037232		A
2 1/2"	G 2 1/2		0,700	1210 A	30229733	with Twist release	A
2 1/2"	G 2 1/2		1,890	1210 A	30037292		A
2 1/2"		G 2 1/2 A	0,600	1211 A	30037332		A
2 1/2"		G 2 1/2 A	1,810	1211 A	30037392		A
2 1/2"	NH 2 1/2"		0,600	1210 A	30258034	thread NFPA 1963	A
2 1/2"		NH 2 1/2 A	0,600	1211 A	30260534	thread NFPA 1963	A

